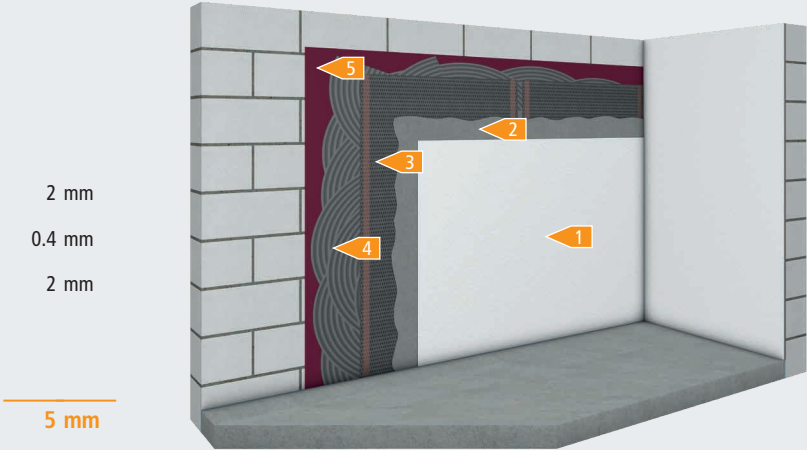




Wall heating with putty





System E-ENERGY CARBON FLEECE

- 1 Wall covering
- 2 Putty / plaster system min 2 mm
- 3 E-ENERGY CARBON FLEECE
- 4 Putty / adhesive
- 5 Primer



Without additional thermal insulation

	-	No thermal insulation available		~ 8 kg / m ²	Without wall covering
---	---	---------------------------------	---	-------------------------	-----------------------

-  Prepare level, clean, load-bearing substrate. Dry screeds and wood-based panels must always be laid in two layers and offset
-  For adhesive and product recommendations see material approvals
-  A professional dew point calculation must be carried out when applying interior thermal insulation to exterior walls. The manufacturer's instructions must be observed.
-  The technical values are indicative and depend on the manufacturer and the used materials can vary. The manufacturer's instructions and generally accepted rules of technology must always be observed.