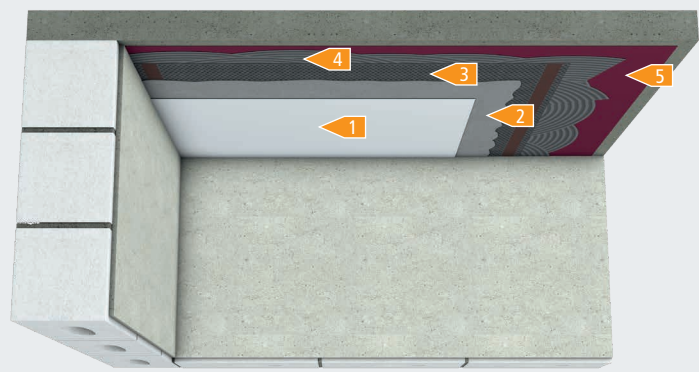




Ceiling heating with putty

System E-ENERGY CARBON FLEECE

- 1** Deckenbelag 2 mm
 - 2** Putty / plaster system min 2 mm 2 mm
 - 3** E-ENERGY CARBON FLEECE 0.4 mm
 - 4** Putty / adhesive 2 mm
 - 5** Primer
- 5 mm



Without additional thermal insulation

| | | | | | |
|--|---|---------------------------------|--|-------------------------|--------------------------|
| | - | No thermal insulation available | | ~ 8 kg / m ² | Without ceiling covering |
|--|---|---------------------------------|--|-------------------------|--------------------------|

- Prepare level, clean, load-bearing substrate. Dry construction boards and wood-based panels must be crack-bridging in the joint area
- For adhesive and product recommendations see material approvals
- If an internal thermal insulation is laid on the ceiling against unheated rooms (attic) or outside air temperature (roof), a dew point calculation must be carried out. The manufacturer's specifications must be observed.
- The technical values are indicative and depend on the manufacturer and the used materials can vary. The manufacturer's instructions and generally accepted rules of technology must always be observed.